

JOB NAME: _____

FIXTURE TYPE: _____

O/A ROW LENGTH: _____ NO. OF ROWS: _____

*STEM OR CABLE LENGTH: _____
(Ceiling to top of fixture)

*PAINT FINISH NUMBER: _____

*PAINT FINISH NAME: _____

Specify finish: Baked enamel Pittsburgh Paint "Voice of Color" System or custom color to be matched (color chip required). Hardware to be standard Blossom White (PPG # 2537) unless specified otherwise.

*NOTE: THIS INFORMATION REQUIRED FOR ORDER PROCESSING

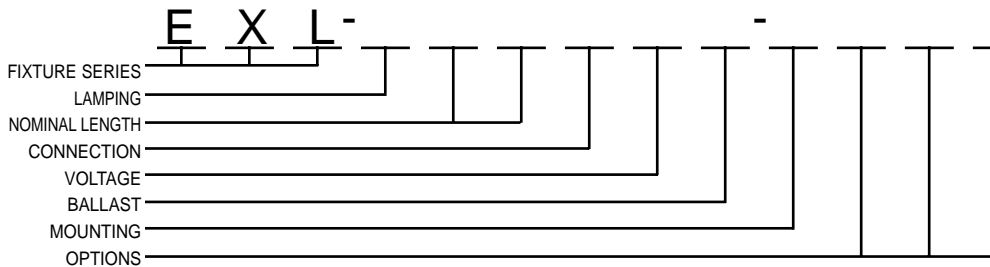
APPLICATIONS

The versatile ExLine series is an innovative new lighting system built on a rigid extruded aluminum rail that can be configured as individual units or continuous rows of infinite length. While remarkably small in scale, ExLine is capable of integrally housing all required ballasts as well as auxiliary equipment including emergency battery packs. Numerous available diffuser and reflector options can be mixed or matched along a common rail, further increasing the versatility of this unique lighting system.

The ExLine Lens fixture utilizes an extruded lens that was designed to provide the ideal light spread for even, striation-free general illumination. A combination of internal linear grooves and high transmission milky-white acrylic make this fixture easy on the eyes while remaining remarkably efficient.

The ExLine Lens fixture can be used in any application where soft, even, and controlled-glare general illumination is required.

ORDERING KEY



* Consult factory prior to specification.
*** Specify California construction where applicable.
**** When more than 3-wire cord is necessary. Specify quantity of conductors required.

FIXTURE SERIES

EXL LENS DIRECT

LAMPING (Per 4ft. Section)

- 1 (1) F54 T5/HO LAMP
- 2 (1) F28 T5 LAMP
- 9 SPECIAL(Specify)*

NOMINAL LENGTH

- 04 4' (1 lamp)
- 08 8' (2 lamps)
- 12 12' (3 lamps)
- 9 SPECIAL(Specify)*

CONNECTION

- I INDIVIDUAL UNIT
- S SINGLE CONNECT
- D DOUBLE CONNECT
- 9 SPECIAL (Specify)*

VOLTAGE

- 1 120 VOLT
- 2 277 VOLT
- 9 SPECIAL (Specify)*

BALLAST

- E ELECTRONIC (Standard)
- D DIMMING (Specify)*
- 9 SPECIAL (Specify)*

MOUNTING

- P PIPE STEM
- C 3/32" DIA. AIRCRAFT CABLE
- S SWIVEL MOUNT (Earthquake Construction/Sloped Ceiling)***
- A ADJUSTABLE 3/32" DIA. AIRCRAFT CABLE (Fitting on Fixture)
- 9 SPECIAL (Specify)*

OPTIONS

- 0 STANDARD
- 3 3-WIRE RETRACTILE CORD (18/3 SVT White)
- B EMERGENCY BATTERY PACK
- C POWER CORD (18/3 SJT White)
- E CALIFORNIA EARTHQUAKE CONSTRUCTION
- F FUSING: HLR/GLR
- M MULTI-WIRE POWER FEED****
- PA PAINTED RAIL (Specify)*
- 9 SPECIAL (Specify)*

ALS reserves the right to make changes to this product without notice, in any way that will not significantly affect installed function or appearance. Contact factory for latest specification details if required

SPECIFICATIONS

Construction: Fixture shall consist of a rigid extruded aluminum rail to house ballasts and other optional electronic equipment. Internal reflectors to be code guage steel with a high reflectance white painted finish. Lens to be a combination of internal linear grooves and high transmission milky-white acrylic for optimum performance and efficiency. Decorative end caps are die-formed aluminum with finish to match clear anodized aluminum.

Mounting: Fixtures shall be suspended by either aircraft cables or stems. Row mounting may be achieved by means of heavy guage joining brackets. Mounting points are at even 4' increments except for end of row and individual units. Mounting points are adjustable along the length for retrofit applications and versatility.

Electrical: Ballasts are UL/cUL listed, with voltages as specified. Electronic is standard.

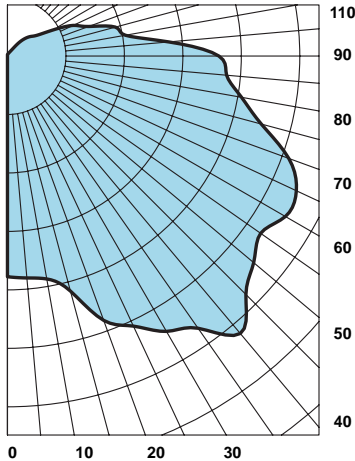
Certification: units are UL/cUL Damp Location labeled.

Finish: Extruded components are clear satin anodized (painting on these components is optional). White polyester powder coat is standard for internal components and mounting hardware. Many optional colors are available (some may require the use of baked enamel in place of powder coat). Optional colors may be selected from the PPG "Voice of Color" system. Consult factory for special finishes and custom color matching.

Weight: Approx. 3Lbs. Per/Ft.

PHOTOMETRY

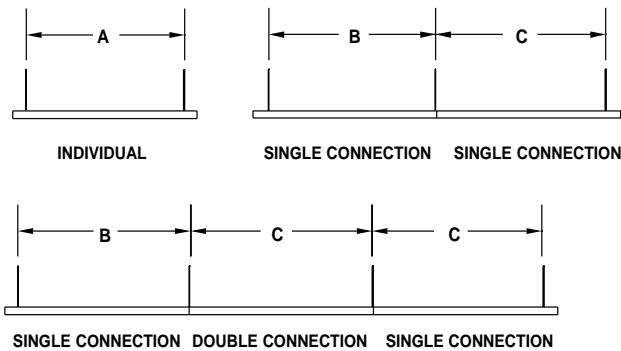
**CANDLEPOWER
DISTRIBUTION CURVE**



Coefficients of Utilization - Zonal Cavity Method:
pfc = 0.20

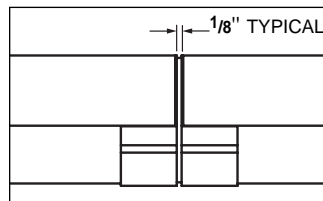
pcc	.8			.7			.5			.3			.1			0		
pw	.7	.5	.3	.1	.7	.5	.3	.1	.5	.3	.1	.5	.3	.1	.5	.3	.1	0
RCR																		
0	89	89	89	89	85	85	85	85	78	78	78	71	71	71	65	65	65	62
1	77	72	67	63	73	68	64	60	62	58	55	56	53	50	50	48	46	43
2	69	60	53	47	65	57	51	45	52	46	42	46	42	38	42	38	35	32
3	61	51	44	37	58	49	42	36	44	38	33	39	35	30	35	31	28	25
4	56	44	36	30	52	42	35	29	38	32	27	34	29	25	31	26	23	20
5	51	39	31	25	48	37	30	24	34	27	22	30	25	21	27	22	19	17
6	46	35	27	21	44	33	26	20	30	24	19	27	21	17	24	20	16	14
7	43	31	23	18	40	29	22	17	27	21	16	24	19	15	22	17	14	12
8	39	28	21	16	37	27	20	15	24	18	14	22	17	13	20	15	12	10
9	37	25	18	14	35	24	18	13	22	16	12	20	15	11	18	14	10	9
10	34	23	16	12	32	22	16	12	20	15	11	18	13	10	17	12	9	8

STANDARD SUSPENSION SPACING



Nominal Row Length	STEM / CABLE SPACING		
	A	B	C
4'	3' - 6"	3' - 6"	4' - 0"
8'	7' - 6"	7' - 6"	8' - 0"
12'	11' - 6"	11' - 6"	12' - 0"

**JOINT DETAIL
(SIDE VIEW)**



**CORNER UNITS
(TOP VIEW)**

