

SPECIFICATIONS

Construction: Fixture shall consist of a rigid extruded aluminum rail to house ballasts and other optional electronic equipment. Internal reflectors to be code guage steel with a high reflectance white painted finish. The diffuser shall be clear extruded acrylic with perforated inlay (patent pending). Decorative end caps are die-formed aluminum with finish to match clear anodized aluminum.

Mounting: Fixtures shall be suspended by either aircraft cables or stems. Row mounting may be achieved by means of heavy guage joining brackets. Mounting points are at even 4' increments except for end of row and individual units. Mounting points are adjustable along the length for retrofit applications and versatility.

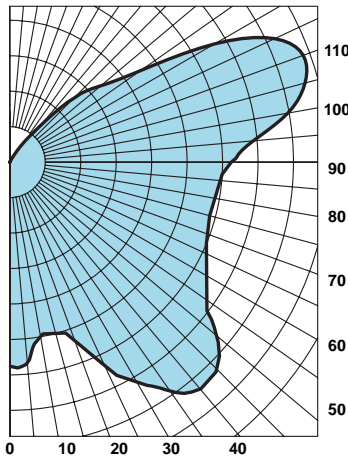
Electrical: Ballasts are UL/cUL listed, with voltages as specified. Electronic is standard.

Certification: units are UL/cUL Dry Location labeled.

Finish: Extruded components are clear satin anodized (painting on these components is optional). White polyester powder coat is standard for internal components and mounting hardware. Many optional colors are available (some may require the use of baked enamel in place of powder coat). Optional colors may be selected from the PPG "Voice of Color" system. Consult factory for special finishes and custom color matching.

Weight: Approx. 3Lbs. Per/Ft.

**CANDLEPOWER
DISTRIBUTION CURVE**

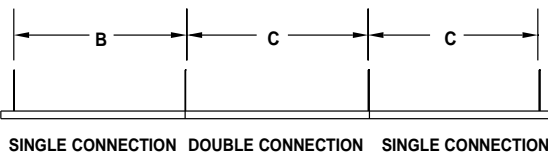
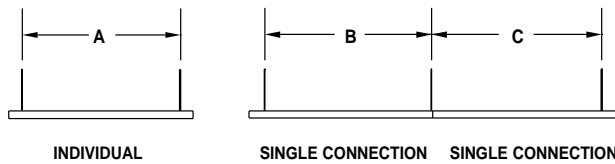


PHOTOMETRY

Coefficients of Utilization - Zonal Cavity Method:
pfc = 0.20

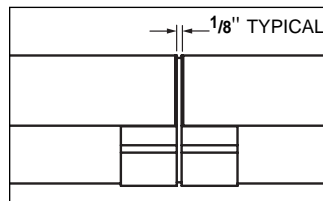
pcc	.8	.7	.5	.3	.1	0
pw	.7 .5 .3 .1	.7 .5 .3 .1	5.3 .1	5.3 .1	5.3 .1	0
RCR						
0	81 81 81 81	76 76 76 76	67 67 67	59 59 59	51 51 51	47
1	71 67 62 59	66 62 59 55	54 51 49	47 44 42	40 38 37	33
2	64 57 51 46	59 53 47 43	46 42 38	39 36 33	33 31 29	25
3	57 49 42 37	53 46 39 35	39 35 31	34 30 27	29 26 23	20
4	52 43 36 30	48 40 33 29	34 29 25	30 25 22	25 22 19	16
5	48 38 31 25	44 35 29 24	31 25 21	26 22 19	22 19 16	14
6	44 33 27 22	40 31 25 20	27 22 18	23 19 16	20 16 14	12
7	40 30 23 19	37 28 22 18	25 19 16	21 17 14	18 15 12	10
8	37 27 21 16	35 25 20 15	22 17 14	19 15 12	16 13 10	9
9	35 25 18 14	32 23 17 14	20 15 12	18 14 11	15 12 9	8
10	32 22 17 13	30 21 16 12	19 14 11	16 12 10	14 11 8	7

STANDARD SUSPENSION SPACING



Nominal Row Length	STEM / CABLE SPACING		
	A	B	C
4'	3' - 6"	3' - 6"	4' - 0"
8'	7' - 6"	7' - 6"	8' - 0"
12'	11' - 6"	11' - 6"	12' - 0"

**JOINT DETAIL
(SIDE VIEW)**



**CORNER UNITS
(TOP VIEW)**

