

JOB NAME: \_\_\_\_\_

FIXTURE TYPE: \_\_\_\_\_

O/A ROW LENGTH: \_\_\_\_\_ NO. OF ROWS: \_\_\_\_\_

\*STEM OR CABLE LENGTH: \_\_\_\_\_  
(Ceiling to top of fixture)

\*PAINT FINISH NUMBER: \_\_\_\_\_

\*PAINT FINISH NAME: \_\_\_\_\_

Specify finish: Baked enamel Pittsburgh Paint "Voice of Color" System or custom color to be matched (color chip required). Hardware to be standard Blossom White (PPG # 2537) unless specified otherwise.

**\*NOTE: THIS INFORMATION REQUIRED FOR ORDER PROCESSING**

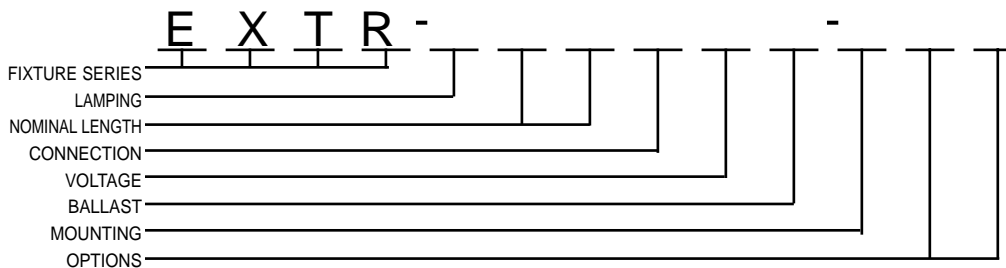
**APPLICATIONS**

The versatile ExLine series is an innovative new lighting system built on a rigid extruded aluminum rail that can be configured as individual units or continuous rows of infinite length. While remarkably small in scale, ExLine is capable of integrally housing all required ballasts as well as auxiliary equipment including emergency battery packs. Numerous available diffuser and reflector options can be mixed or matched along a common rail, further increasing the versatility of this unique lighting system.

The ExLine Latitude with reflector can be used in any application where the ceiling and wall surfaces are not suitable as reflectors, but the effect of indirect illumination is desired. Select the white reflector model where broader general illumination is called for, or the specular reflector (standard) where more concentrated down-light is required.

The ExLine Latitude utilizes our exclusive (patent pending) tube diffuser to obscure the lamp while bouncing much of the illumination off the integral reflector where it is then directed downward to produce the effect of indirect lighting.

**ORDERING KEY**



\* Consult factory prior to specification.  
\*\*\* Specify California construction where applicable.  
\*\*\*\* When more than 3-wire cord is necessary. Specify quantity of conductors required.

**FIXTURE SERIES**

EXTR LATITUDE TUBE  
W/ REFLECTOR

**LAMPING (Per 4ft. Section)**

- 1 (1) F54 T5/HO LAMP
- 2 (1) F28 T5 LAMP
- 9 SPECIAL(Specify)\*

**NOMINAL LENGTH**

- 04 4' ( 1 lamp)
- 08 8' ( 2 lamps)
- 12 12' ( 3 lamps)
- 9 SPECIAL(Specify)\*

**CONNECTION**

- I INDIVIDUAL UNIT
- S SINGLE CONNECT
- D DOUBLE CONNECT
- 9 SPECIAL (Specify)\*

**VOLTAGE**

- 1 120 VOLT
- 2 277 VOLT
- 9 SPECIAL (Specify)\*

**BALLAST**

- E ELECTRONIC (Standard)
- D DIMMING (Specify)\*
- 9 SPECIAL (Specify)\*

**MOUNTING**

- P PIPE STEM
- C 3/32" DIA. AIRCRAFT CABLE
- S SWIVEL MOUNT (Earthquake Construction/Sloped Ceiling)\*\*\*
- A ADJUSTABLE 3/32" DIA. AIRCRAFT CABLE (Fitting on Fixture)
- 9 SPECIAL (Specify)\*

**OPTIONS**

- 0 STANDARD
- 3 3-WIRE RETRACTILE CORD (18/3 SVT White)
- B EMERGENCY BATTERY PACK
- C POWER CORD (18/3 SJT White)
- E CALIFORNIA EARTHQUAKE CONSTRUCTION
- F FUSING: HLR/GLR
- M MULTI-WIRE POWER FEED\*\*\*\*
- BL NO TUBE DIFFUSER (Bare Lamp Exposed)
- PA PAINTED RAIL (Specify)\*
- PR PAINTED REFLECTOR (White)\*
- 9 SPECIAL (Specify)\*

Product refinement is a continuous endeavor at ALS. Therefore, ALS reserves the right to change fixture specifications. Consult factory for latest product information.

**SPECIFICATIONS**

**Construction:** Fixture shall consist of a rigid extruded aluminum rail to house ballasts and other optional electronic equipment. Reflectors shall be a low iridescent specular aluminum(standard). Optional reflector to be high reflectance code gauge steel with white finish. The diffuser shall be clear extruded acrylic with perforated inlay (patent pending). Decorative end caps are die-formed aluminum with finish to match clear anodized aluminum.

**Mounting:** Fixtures shall be suspended by either aircraft cables or stems. Row mounting may be achieved by means of heavy guage joining brackets. Mounting points are at even 4' increments except for end of row and individual units. Mounting points are adjustable along the length for retrofit applications and versatility.

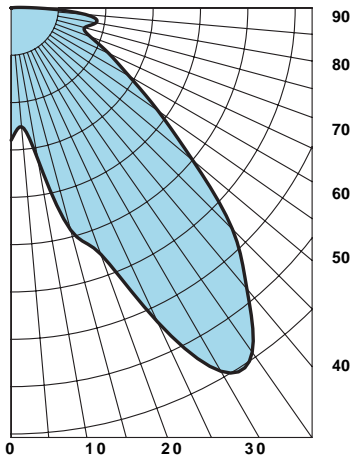
**Electrical:** Ballasts are UL/cUL listed, with voltages as specified. Electronic is standard.

**Certification:** units are UL/cUL Dry Location labeled.

**Finish:** Extruded components are clear satin anodized (painting on these components is optional). White polyester powder coat is standard for internal components and mounting hardware. Many optional colors are available (some may require the use of baked enamel in place of powder coat). Optional colors may be selected from the PPG "Voice of Color" system. Consult factory for special finishes and custom color matching.

**Weight:** Approx. 3Lbs. Per/Ft.

**CANDLEPOWER DISTRIBUTION CURVE**

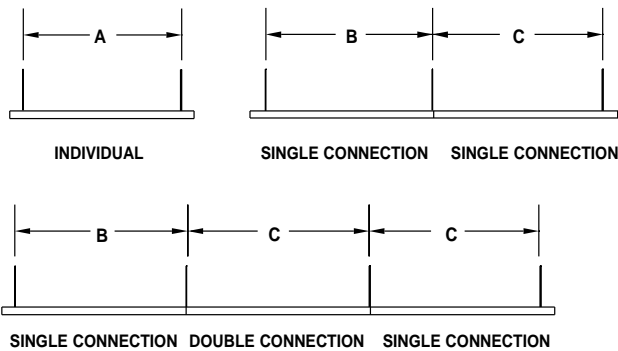


**PHOTOMETRY**

Coefficients of Utilization - Zonal Cavity Method:  
pfc = 0.20

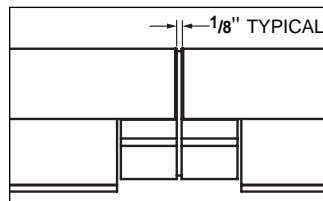
pcc	.8	.7	.5	.3	.1	0
pw	.7 .5 .3 .1	.7 .5 .3 .1	.5 .3 .1	.5 .3 .1	.5 .3 .1	0
RCR						
0	88 88 88 88	86 86 86 86	82 82 82	78 78 78	75 75 75	73
1	79 75 71 67	77 73 69 66	69 67 64	66 64 62	63 61 60	58
2	71 64 58 54	69 63 57 53	60 55 51	57 53 50	55 51 49	47
3	64 55 49 43	62 54 48 43	52 46 42	50 45 41	47 44 40	39
4	58 48 41 36	56 47 41 36	45 40 35	43 38 34	42 37 34	32
5	53 43 35 30	51 42 35 30	40 34 29	38 33 29	37 32 29	27
6	49 38 31 26	47 37 30 25	36 30 25	34 29 25	33 28 24	23
7	45 34 27 22	43 33 27 22	32 26 22	31 25 21	30 25 21	20
8	41 31 24 19	40 30 23 19	29 23 19	28 22 19	27 22 18	17
9	38 28 21 17	37 27 21 17	26 20 16	25 20 16	24 20 16	15
10	36 25 19 15	35 25 19 15	24 18 15	23 18 14	22 18 14	13

**STANDARD SUSPENSION SPACING**



Nominal Row Length	STEM / CABLE SPACING		
	A	B	C
4'	3' - 6"	3' - 6"	4' - 0"
8'	7' - 6"	7' - 6"	8' - 0"
12'	11' - 6"	11' - 6"	12' - 0"

**JOINT DETAIL (SIDE VIEW)**



**CORNER UNITS (TOP VIEW)**

